

REMOTE MULTIPLEX ANNUNCIATORS - HRA-1000 SERIES



DESCRIPTION

Hochiki's modular HRA-1000 Series Remote Annunciators are multiplex annunciator panels that provide a large capacity of annunciation with the Hochiki HCP-1000 Series Fire Alarm Control Panels. The HRA-1000 Series is comprised of three chassis models. The HRAM-1032TZDS Main Annunciator Chassis consists of sealed membrane-like buttons and LED indicators. Complete with common control features and indicators, the HRAM-1032TZDS Main Annunciator Chassis provides up to 32 points of annunciation and can be expanded with up to four HRAX Adder Annunciator Chassis Modules. Defined via DIP switches, the HRA-1000 Remote Annunciators are automatically configured to match the fire alarm control panel configuration.

The HRAX-1048TZDS Adder Annunciator Chassis has the same basic construction as the Main Annunciator Chassis and can provide up to 48 points of annunciation. It interconnects to either a HRAM-1032TZDS Main Annunciator or a HRAX-1048TZDS Adder Annunciator Chassis. Up to four HRAX-1048TZDS Adder Annunciator Chassis can be connected to one HRAM-1032TZDS. The annunciators come standard with bi-colored LEDs to annunciate alarm or supervisory points. Each display point can be identified by the slide-in label that slides in beside the LED. The annunciator modules can mount into five various sized enclosures.

STANDARD FEATURES

- Large capacity of annunciation
- Provides annunciation through three annunciator chassis modules
- Bi-colored LEDs
- Slide-in labels for each display point
- Surface mount to standard gang outlet boxes
- Sealed membrane-like buttons and LED indicators
- Local Buzzer, Silence and Lamp Test switches
- LEDs for A.C. On, Common Trouble, Remote Failure, Aux. Disconnect, Acknowledge, General Alarm, Signal Silence and Test/Configuration Mode
- Controls for System Reset, Lamp Test, Fire Drill, Aux. Disconnect, Buzzer Silence, Signal Silence, General Alarm and Acknowledge
- Each annunciation point is automatically selected for either Alarm (red) or Supervisory (amber) to match the fire alarm control panel configuration
- Five sizes of enclosures

PRODUCT LISTINGS



California State
Fire Marshal
7120-0410:0157

Specifications subject to change without notice.

Continued on back.

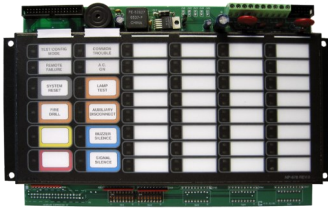
Hochiki America Corporation
7051 Village Drive, Suite 100, Buena Park, CA 90621-2268
Phone: 714/522-2246 Fax: 714/522-2268
Technical Support: 800-845-6692 or technicalsupport@hochiki.com



Find latest revision at www.hochiki.com

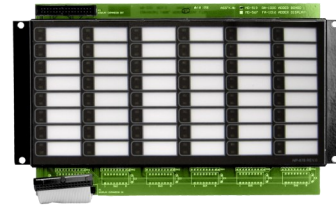
F0067A 04/2015

REMOTE MULTIPLEX ANNUNCIATORS - HRA-1000 SERIES



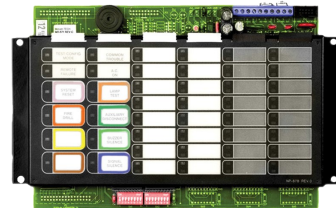
HRAM-1032TZDS MAIN REMOTE LED ANNUNCIATOR

The HRAM-1032TZDS Main Remote LED Annunciator provides common annunciator functions and 32 points of LED annunciation. The HRAM-1032TZDS has indicators for A.C. On, Common Trouble and Signal Silence and controls for System Reset, Lamp Test, Fire Drill, Buzzer Silence and Signal Silence. Each display point can be identified by the slide-in label that slides in besides the LED. The HRAM-1032TZDS allows for the control switches to be disabled on a per function basis for areas that do not require certain common control functions to be remotely located from the fire alarm control unit. The HRAM-1032TZDS can be expanded with the addition of HRAX-1048TZDS Programmable LED Annunciator Modules. The HRAM-1032TZDS occupies one display position in the HBB-1000 series.



HRAX-1048TZDS PROGRAMMABLE LED ANNUNCIATOR MODULE

The HRAX-1048TZDS Programmable LED Annunciator Module provides 48 programmable bi-colored LEDs. The HRAX-1048TZDS connects to the main control unit or main annunciator module when mounted remotely. Each display point can be identified by the slide-in label that slides in besides the LED. The HRAX-1048TZDS occupies one display position in the HBB-1000 series.



HRAM-1016TZDS MAIN REMOTE LED ANNUNCIATOR

The HRAM-1016TZDS Main Remote LED Annunciator provides common annunciator functions and 16 points of LED annunciation. The HRAM-1016TZDS has indicators for A.C. On, Common Trouble and Signal Silence and controls for System Reset, Lamp Test, Fire Drill, Buzzer Silence and Signal Silence. Each display point can be identified by the slide-in label that slides in besides the LED. The HRAM-1016TZDS allows for the control switches to be disabled on a per function basis for areas that do not require certain common control functions to be remotely located from the fire alarm control unit. The HRAM-1016TZDS is a non-expandable unit that occupies one display position in the HBB-1000 series.

REMOTE MULTIPLEX ANNUNCIATORS - HRA-1000 SERIES

HBB-1001 SEMI-FLUSH ENCLOSURE

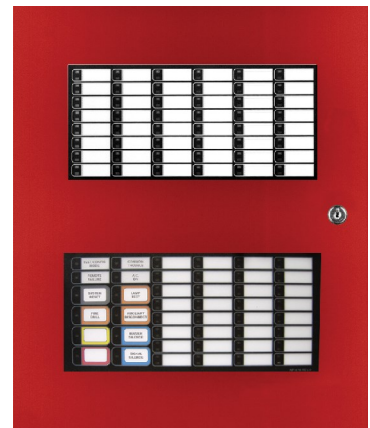
The HBB-1001 comes complete with a back box, door and hinge. The enclosure door comes with a Lexan™ window, two keys and a durable lock. The door comes hinged to the left side of the box. The box is capable of handling one HRAM-1032TZDS Main Annunciator Chassis which provides up to 32 points of annunciation.



HBB-1001

HBB-1002 SEMI-FLUSH ENCLOSURE

The HBB-1002 comes complete with a back box, door and hinge. The enclosure door comes with Lexan™ windows, two keys and a durable lock. The door comes hinged to the left side of the box. The enclosure is capable of handling one HRAM-1032TZDS Main Annunciator Chassis and one HRAX-1048TZDS Adder Annunciator Chassis.



HBB-1002

HBB-1003 SEMI-FLUSH ENCLOSURE

The HBB-1003 comes complete with a back box, door and hinge. The enclosure door comes with Lexan™ windows, two keys and a durable lock. The enclosure is capable of handling one HRAM-1032TZDS Main Annunciator Chassis and two HRAX-1048TZDS Adder Annunciator Chassis.



HBB-1003

HBB-1008 SEMI-FLUSH ENCLOSURE

The HBB-1008 comes complete with a back box, door and hinge. The enclosure door comes with Lexan™ windows, two keys and a durable lock. The enclosure is capable of handling up to one HRAM-1032TZDS Main Annunciator Chassis, four HRAX-1048TZDS Adder Annunciator Chassis and three additional slots for a combination of either fan damper modules, zoned audio paging modules and zoned fire fighters' telephone modules.

HBB-1012 SEMI-FLUSH ENCLOSURE

The HBB-1012 comes complete with a back box, door and hinge. The enclosure door comes with Lexan™ windows, two keys and a durable lock. The enclosure is capable of handling up to one HRAM-1032TZDS Main Annunciator Chassis, four HRAX-1048TZDS Adder Annunciator Chassis and seven additional slots for a combination of either fan damper modules, zoned audio paging modules and zoned fire fighters' telephone modules.

REMOTE MULTIPLEX ANNUNCIATORS - HRA-1000 SERIES

DIMENSIONS

HBB-1001 Enclosure: 9"H x 12.75"W x 1.2"D

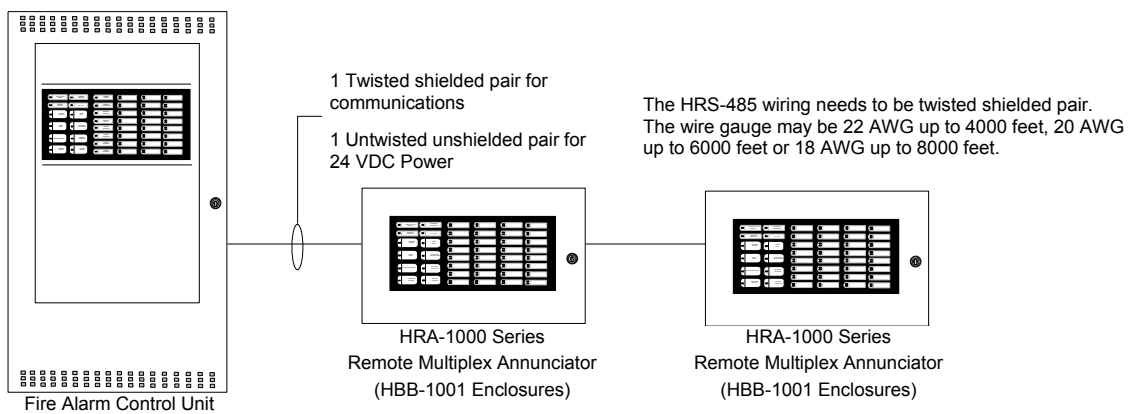
HBB-1008 Enclosure: 33"H x 22.5"W x 1.25"D

HBB-1002 Enclosure: 18"H x 12.75"W x 1.2"D

HBB-1012 Enclosure: 45"H x 22.5"W x 1.25"D

HBB-1003 Enclosure: 26.4"H x 12.75"W x 1.2"D

TYPICAL REMOTE ANNUNCIATOR WIRING DIAGRAM



NOTE: Annunciator wiring must be as shown. Star type or "T" tap connections are not allowed. The HRA-1000 Series Remote Annunciators must be wired in a loop configuration.

ORDERING INFORMATION

MODEL	DESCRIPTION
MODULES	
HRAX-1016TZDS	Main Annunciator Chassis c/w Common Control Features, Indicators and
HRAM-1032TZDS	Main Annunciator Chassis c/w Common Control Features, Indicators and
HRAX-1048TZDS	Adder Annunciator Chassis c/w 48 Bi-Colored LEDs and 48 Trouble LEDs
BACK BOXES	
HBB-1001	Annunciator back box with key lock door (Houses 1 module)
HBB-1002	Annunciator back box with key lock door (Houses 2 module)
HBB-1003	Annunciator back box with key lock door (Houses 3 module)
HBB-1008	Annunciator back box with key lock door (Houses 8 module)
HBB-1012	Annunciator back box with key lock door (Houses 12 module)